

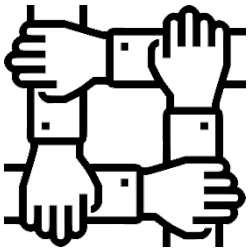


## A CHARTER FOR INCLUSIVE RELATIONSHIPS, SEX AND HEALTH EDUCATION (RSHE)

At Whitegate we commit to providing an inclusive Relationships, Sex and Health Education (RSHE), which will enable all pupils to flourish.

### As a Transform school we commit to:

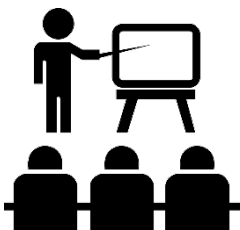
Working in partnership and building positive relationships with parents and carers



Annual consultation with parents and carers in the development and delivery of the RSHE curriculum

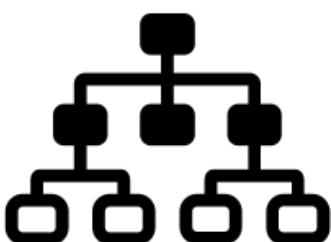
Working in partnership and gaining the views of identified community organisations

Delivering a high quality, age appropriate RHSE curriculum



Creating an RHSE curriculum that focusses on giving the pupils the knowledge they need to make informed decisions about their wellbeing, health and relationships

Creating and sharing a RSHE curriculum framework and provide clarity on how it is organised and delivered



Creating an RHSE curriculum based on accurate information, including about the law and legal rights